



ALASKA DIVISION OF HOMELAND SECURITY & EMERGENCY MANAGEMENT



SITUATION REPORT 25-006• January 6, 2025

Toll-Free 1.800.478.2337

Anchorage Area 907.428.7000

SEOC 907.428.7100

| | | |
|--|---|--|
| <p><u>SEOC Preparedness Level</u> Level 1-Routine Operations</p> | <p>http://ready.alaska.gov</p> | <p><u>National Terrorism Advisory System:</u> Read the NTAS Bulletin here</p> |
| <p><u>Maritime Security (MARSEC)</u> Level:1- Minimum Appropriate Security Measures</p> | <p>WHO Novel Coronavirus Pandemic (COVID-19): 2019 Novel Coronavirus</p> | <p><u>Alaska Military Installation Force Protection</u> <u>Level:</u> FPCON Bravo</p> |

(Significant changes from previous situation reports are red.)

Significant Issues:

None

Department of Health (DOH):

For current information, see: <https://health.alaska.gov/dph/Pages/default.aspx>
<https://health.alaska.gov/dph/Emergency/Pages/prepared/default.aspx>

NTAS Bulletin:

The U.S. Department of Homeland Security issued an updated National Terrorism Advisory Bulletin on May 24, 2023. The current and expired bulletins can be viewed at the below link.
<https://www.dhs.gov/national-terrorism-advisory-system>

Travel Alerts and Conditions:

For current driving conditions, dial 511 or visit: <https://511.alaska.gov/>

Mile 83.5 Seward Highway- Road closed due to vehicle blocking traffic lanes, near 20-Mile River.

Barry Arm Landslide / Tsunami Risk:

For the latest information on the Barry Arm Landslide and Tsunami risk, click here:
<https://dggs.alaska.gov/hazards/barry-arm-landslide.html>

Earthquakes:

United States Geological Service (USGS) Earthquake Information: <http://earthquake.usgs.gov/>
National Tsunami Warning Center: <http://tsunami.gov/>

Alaska Volcanoes:

Great Sitkin Alert Level: **Watch** and Aviation Color Code: **Orange**

Mt. Spurr Alert Level: **Advisory** and Aviation Color Code: **Yellow**

For Alaska Volcano updates, go to: <https://www.avo.alaska.edu/>

Air Quality Index (AQI) Advisories:

For the most up-to-date Air Quality Index Advisories:

<http://dec.alaska.gov/Applications/Air/airtoolsweb/Home/Index>

Spills of Oil and Hazardous Substances:

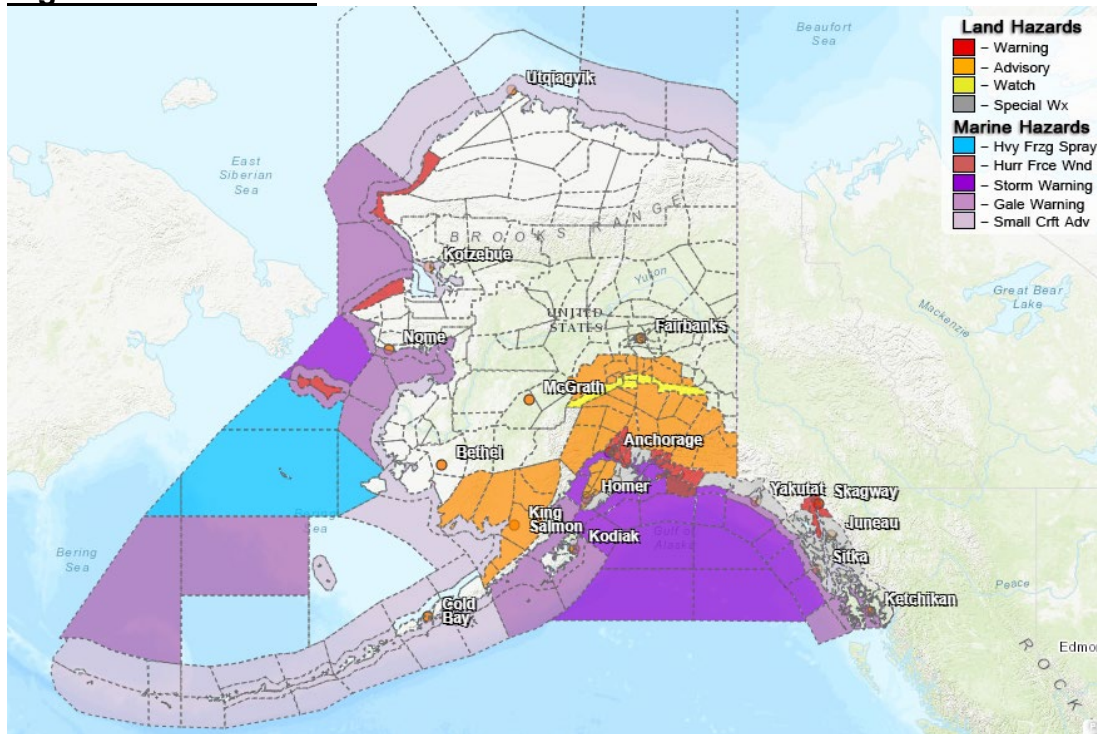
The Alaska Division of Environmental Conservation (ADEC) Spill Prevention and Response page is located at: <https://dec.alaska.gov/spar/>

Alaska Cyber Security Information:

State Employees may sign up for cybersecurity notifications and alerts at:

<https://oit.alaska.gov/security>

Significant Weather:



Special Weather Statement:

East Turnagain Arm, Western Prince William Sound-strong winds from Whittier this afternoon and evening, areas of very light freezing rain earlier this week.

Winter Storm Warning:

Municipality of Skagway, Haines Borough and Klukwan- remains in effect until noon today.

Northeast Prince William Sound-in effect until 6am Tuesday for Thompson Pass.

High Wind Warning:

Southeast Prince William Sound-from noon today until 3 am Tuesday.

Matanuska Valley, Anchorage, East Turnagain Arm-from 3pm today until 6am Tuesday.

Western Arctic Coast, St Lawrence Island, Shishmaref- in effect until 9pm Tuesday.

Winter Weather Advisory:

Bristol Bay-in effect from 1pm this afternoon until midnight tonight from Dillingham north.

Western Kenai Peninsula-in effect until 9am this morning to 3am Tuesday.

Copper River Basin, Anchorage, Matanuska Valley-in effect until 6am Tuesday.

Susitna Valley-from noon today until 3pm Tuesday.

Wind Advisory:

Delta Junction-until noon today

Eastern Alaska Range North of Trims Camp-in effect until 3pm this afternoon

Northern Denali Borough -from 9pm this evening to noon Tuesday.

Winter Storm Watch:

Southern Denali Borough, Eastern Alaska Range South of Trims Camp-from this evening through Wednesday afternoon.

High Wind Watch:

Eastern Alaska Range North of Trims Camp-until 3pm this afternoon.

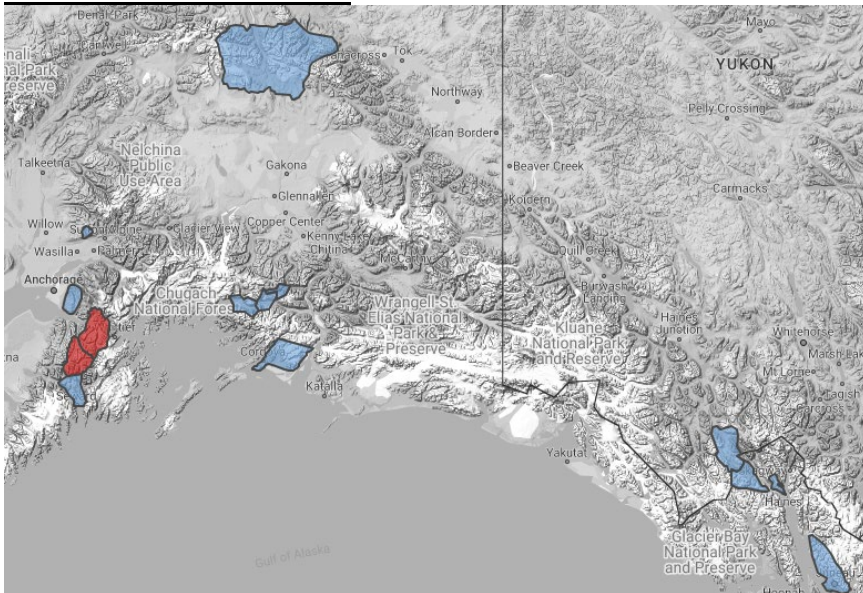
Hydrologic Outlook:

City and Borough of Yakutat, Municipality of Skagway, Haines Borough and Klukwan, Glacier Bay, Eastern Chichagof Island, Cape Fairweather to Lisianski Strait, City and Borough of Sitka, Admiralty Island, City and Borough of Juneau, Petersburg Borough, Western Kupreanof and Kuiu Island- active wet weather poised to return to northern panhandle.

For more information and the most current Weather, Watches/Warning/Advisories go to:

<https://www.weather.gov/arh/>

Avalanche Conditions:



- **Valdez-Moderate** at all levels
- **Turnagain Pass** – High above 1,000' and above, Considerable below 1,000'

For more information and the most current avalanche conditions, go to: <https://alaskasnow.org/>

The Next Situation Report will be on **January 7, 2025**. An interim report will be prompted by a significant change in the situation or the threat level. This report is posted on the internet at

<https://ready.alaska.gov/sitrep>.

To register for email distribution, **PLEASE** go to:

<http://list.state.ak.us/mailman/listinfo/dhsem.situation.report>.

Direct questions regarding this report to the SEOC at 907-428-7100 or seoc@alaska.gov.